



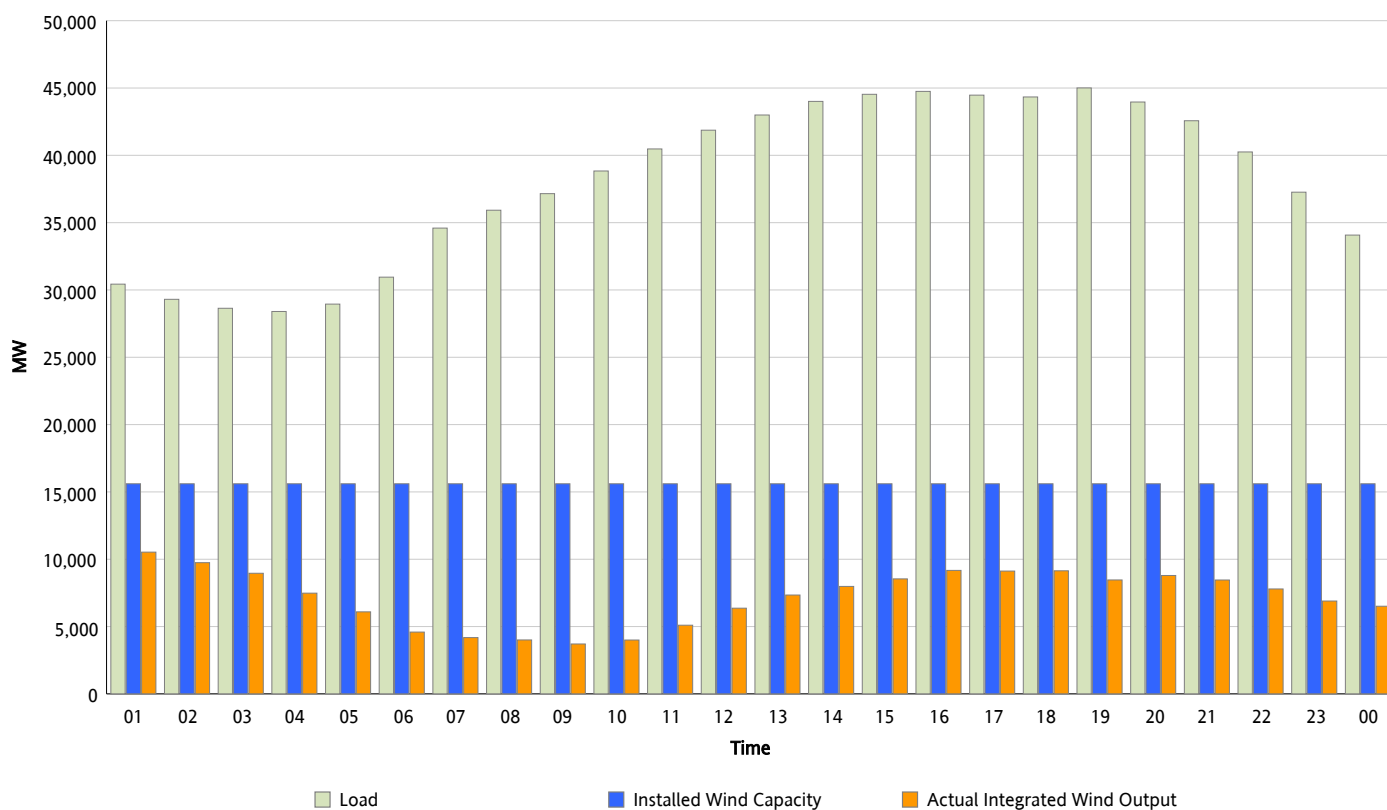
ERCOT Grid Operations

Wind Integration Report : 11/05/2015

| | |
|----------------------|-----------|
| Peak Load | 45,006 MW |
| Load Peak Hour (HE) | 19 |
| Wind Over Peak | 8,462 MW |
| Wind Record 10/22/15 | 12,238 MW |
| Max Wind Value* | 11,043 MW |
| Wind Peak Time | 00:00 |
| Wind Integration % | 35.41 % |

Hourly Average Actual Load vs. Actual Wind Output

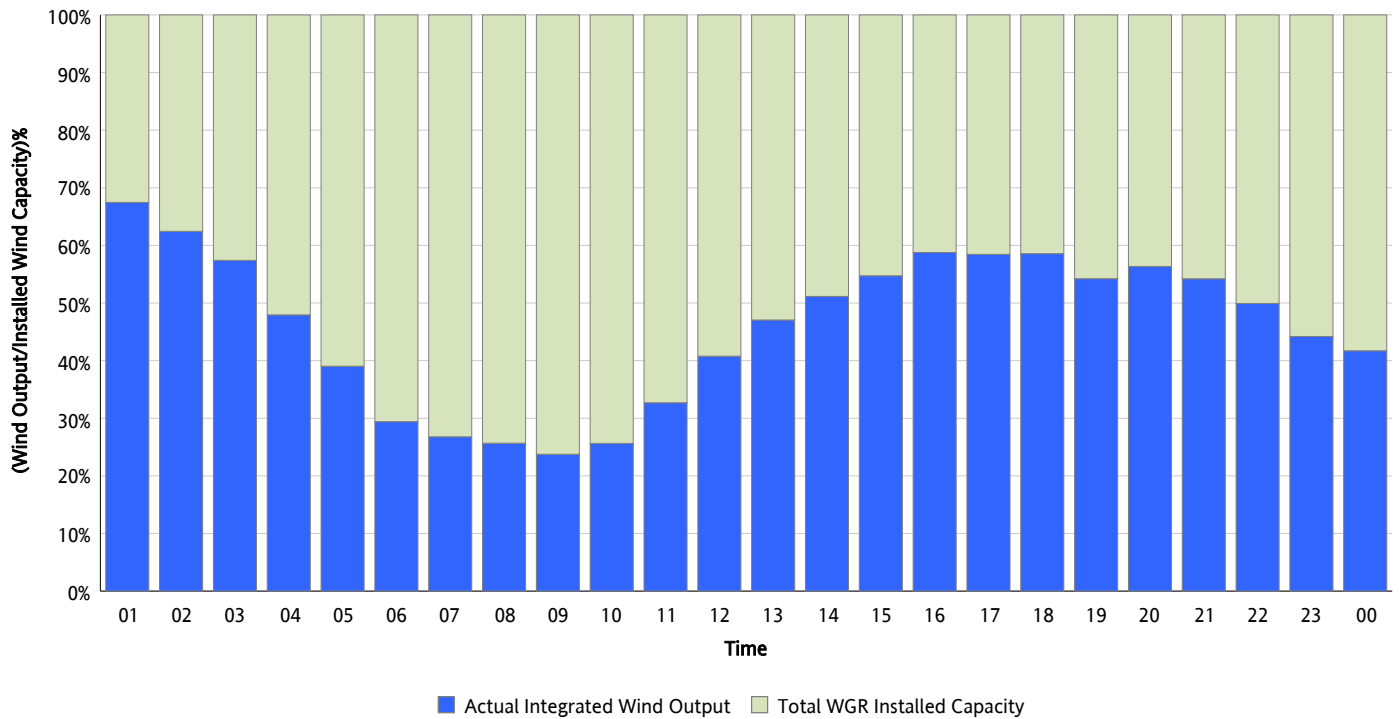
11/05/2015



* Wind Record and Wind Max represent instantaneous values and the rest of the values are integrated over the hour.
Capacity numbers used in the graphs are based on the expected commercial operation date of each Wind Generation Resource.

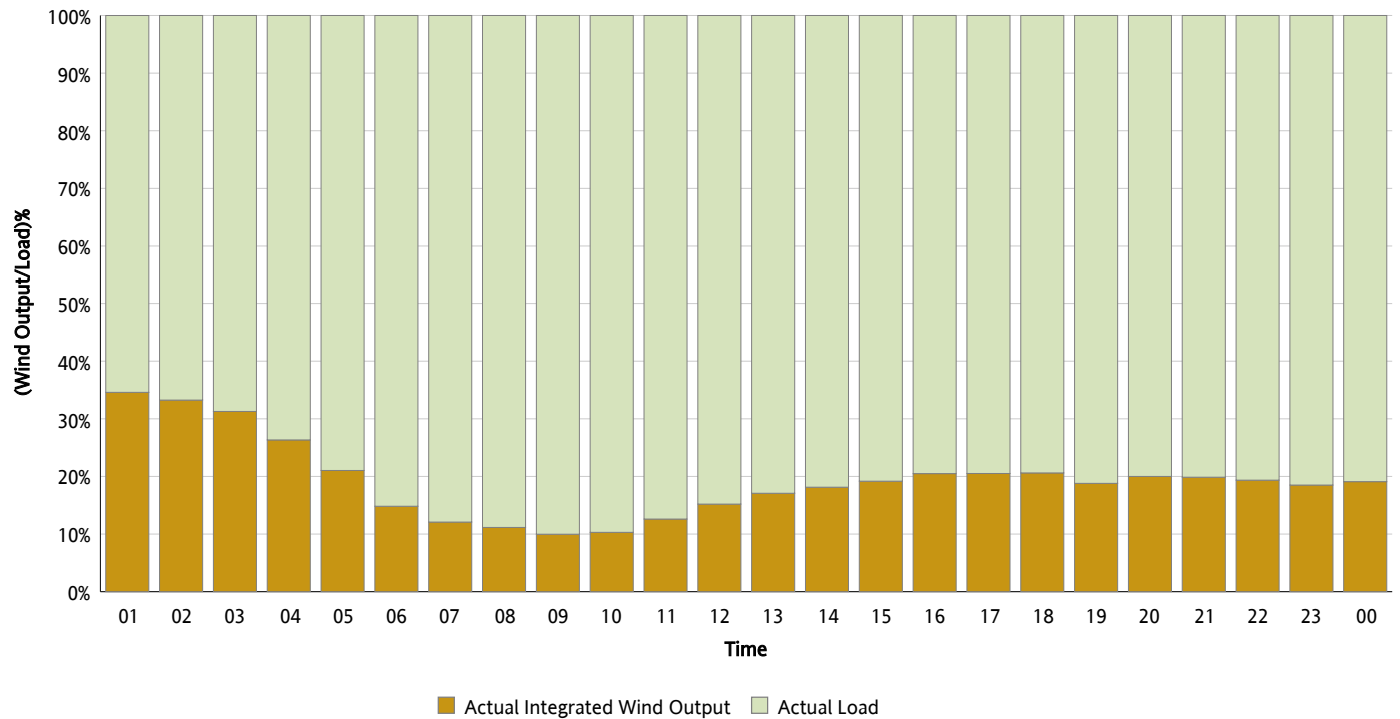
Actual Wind Output as a Percentage of the Total Installed Wind Capacity

11/05/2015



Actual Wind Output as a Percentage of the ERCOT Load

11/05/2015



ERCOT Load vs. Actual Wind Output

10/29/2015 - 11/05/2015

